

ABOUT FRY REGLET

Fry Reglet Corporation has become a lot more than a company of parts and pieces. For many years we've helped designers realize their dreams by engineering the special joints, intersections and assemblies that simply can't be done in the field and this has become the standard of practice at Fry Reglet.

WHERE FRY REGLET IS GOING

Long known for quality manufacturing of the individual parts and pieces of the designer's and builder's palettes, Fry Reglet is proud of our track record for making products that make buildings really special. Over 55 years of the highest quality manufacturing and fabrication have earned us a place in great buildings around the world.

FROM PARTS & PIECES TO ENGINEERED SYSTEMS

Today, Fry is evolving to a lot more than a company of parts and pieces. For many years we've helped designers realize creative dreams by engineering the special joints, intersections and assemblies that simply can't be done in the field. We've grown a solid Engineering and CAD department to support the vision of designers through project engineering, the best shop drawings in the industry, precise fabrication and near fool-proof instructions. And, of course, we deliver on time and within the budget. It's the standard of practice at Fry Reglet.

Fry Reglet has become a trusted source for interior and exterior products and systems that begin as innovations—for aesthetics, economy or resource efficiency—then migrate to become the industry standards of quality construction.

We continue focusing on environmental responsibility at Fry Reglet. Nearly all of our products are made with recycled aluminum and we're looking for ways to further reduce demands on the environment and eliminate waste.

We're also helping designers create buildings that are more responsible in resource consumption and are innovating new details with a clear focus on LEED™ certification. As always, we're asking designers for their latest challenges. Just call us at 1-800-237-9773.

The support staff at Fry Reglet is the best in the business. We take customer service very seriously. We're ready to help at every stage.

- **Concept Development:** Working closely with the architect and design team, our engineering staff provides project guidance and product solutions to meet a variety of architectural requirements.
- **Custom Designs:** Although we offer an extensive line of off-the-shelf reveals and moldings, we also have the capabilities of designing, detailing and supplying custom components to meet any design challenge.
- **Detailed Drawings:** Our CAD department provides detailed drawings for specialty and custom components for approval prior to fabrication.
- **Budget Prices:** Our customer service representatives are among the best in the business and assist architects, designers and contractors with the preparation of budget price estimates.
- **Installation Drawings:** Project installation drawings, details and installation templates to assist the installer are all part of our ongoing customer service support.
- **Test Data:** Fry Reglet is a technical leader in the industry providing complete product test data for all product lines.
- **Web Site:** Complete CSI specifications and multiple format CAD details can be accessed through our website, www.fryreglet.com.

MANUFACTURING LOCATIONS



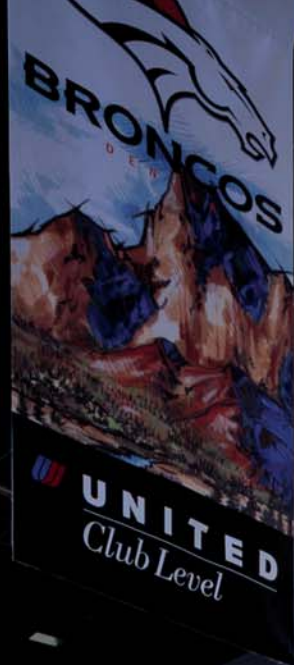
FRY REGLET CORPORATION • 800.237.9773 • 800.200.4379 (fax)

12342 Hawkins Street
Santa Fe Springs, CA 90670

405 North 75th Avenue
Building #2, Suite 134
Phoenix, AZ 85043
800.955.2343

1377 Stonefield Court
Alpharetta, GA 30004

www.fryreglet.com



REVEALS



CONTENTS

REVEALS & MOLDINGS

Drywall Moldings

Reveals, Control Joints,
Trims, Corners, Column
Collars & Rings, Acoustical, Special
Sections, Installation
Glazing System,
Integrated Functional System

PLASTER & E.I.F.S MOLDINGS

Reveals, Drip Screeds,
Control Joints, Soffit Vents,
Trims, Corners, E.I.F.S. Materials,
Veneer Plaster, Installation

FIBER CEMENT PANEL TRIMS


FACTORY FABRICATION & FINISH

Intersections, Decorative
Elements, Curved Moldings,
Molding Finishes

ROOF FLASHING

Springlok® Flashing System
"SM" Surface Mounted Reglet
"CO" Concrete Reglet
"ST" Stucco Reglet
"MA" Masonry Reglet
"STX" Stucco Reglet
Accessories

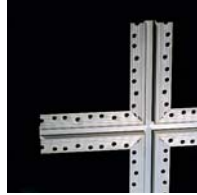
Wind Load Test Data



Over 55 years, Fry Reglet has become a trusted source for all the products, details and support that make buildings more functional, beautiful and economical. But there is also a new Fry: systems-oriented and focused on service and innovative design.

WHERE FRY REGLET IS GOING

Long known for quality manufacturing of the individual parts and pieces of the designer's and builder's palettes, Fry Reglet is proud of our track record for making products that make buildings really special. Over 55 years of the highest quality manufacturing and fabrication have earned us a place in great buildings around the world.



FROM PARTS & PIECES TO ENGINEERED SYSTEMS

Today, Fry is evolving to a lot more than a company of parts and pieces. For many years we've helped designers realize creative dreams by engineering the special joints, intersections and assemblies that simply can't be done in the field. We've grown a solid Engineering and CAD department to support the vision of designers through project engineering, the best shop drawings in the industry, precise fabrication and near fool-proof instructions. And, of course, we deliver on time and within the budget. *It's the standard of practice at Fry Reglet.*

Fry Reglet has become a trusted source for interior and exterior products and systems that begin as innovations—for aesthetics, economy or resource-efficiency—then migrate to become the industry standards of quality construction.

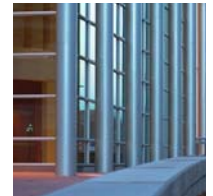


WHAT'S NEW?

After years of R&D, Fry Reglet has **introduced Graph**, an interior surface system that offers designers a vast array of options for interior walls and surfaces. Graph is a new way to think about interior wall finishes and offers significant advantages to the designer: *fewer design and construction documents are needed to achieve a high quality installation.*



What makes a Column Smart? We continue our new way of looking at the pre-engineered column cover. SmartColumns are the next step in column wraps—the active integration of building services and utilities. Rest assured that your vision—and all the details, fabrication and installation know-how—will reach the job site ready to install and look smart.



We continue focusing on environmental responsibility at Fry Reglet. Nearly all of our products are made with recycled aluminum and we're looking for ways to further reduce demands on the environment and eliminate waste.

We're also helping designers create buildings that are more responsible in resource consumption and are *innovating new details with a clear focus on LEED™ certification.* As always, we're asking designers for their latest challenges. *Just call us at 1-800-237-9773.*



THE PROPERTIES OF EXTRUDED ALUMINUM

Fry Reglet Drywall Reveals, Moldings and the Graph Platform are extruded from aluminum alloy 6063-T5. This is an extremely durable material that has numerous advantages when used as a building component.

- Over 70% Recycled Content
— *we use all the recycled aluminum we can get*
- Dimensional Stability
— *negligible thermal shrinkage and expansion*
- Rigidity
— *products retain their shape and straightness*
- Strength-To-Weight Ratio
— *easy to handle, yet tough on the job*
- Non-Ferrous
— *resistant to the environment; will not rust*
- Precise Details
— *extrusion produces clean, crisp lines*
- Anodized Finish
— *electro-chemical reaction for permanent coating*
- Paint Finishing
— *process allows paint to penetrate pores of the metal so it's more resistant to cracking and chipping*

PRODUCT ASSORTMENT

Fry Reglet's stocking warehouses in Santa Fe Springs, California, Phoenix, Arizona and Alpharetta, Georgia carry significant inventory to address a variety of job site conditions.

- Reveal Moldings
- Control Joints
- Trims
- Corners
- Column Collars and Rings
- Acoustical Moldings
- Special Sections

RECENT PROJECTS

Rio, Las Vegas
Denver Convention Center*
George Bush Intercontinental Airport*
H. Roe Bartles Meeting Room, Kansas City*
State Office Building, Las Vegas

Rock & Roll Hall of Fame
Rose Planetarium
Getty Museum
INVESCO Field at Mile High
Federal Triangle
Philips Arena
Bank One Ballpark
Fort Lauderdale Airport
Federal Courthouse - Denver
USA Today/Gannett
Newark Airport
Minneapolis Convention Center
Universal Studios Islands of Adventure
Ford Museum
Philadelphia Airport
O'Hare Airport
Paul Brown Stadium
American Airlines Arena - Miami

*2005 CISCA Award Winners

