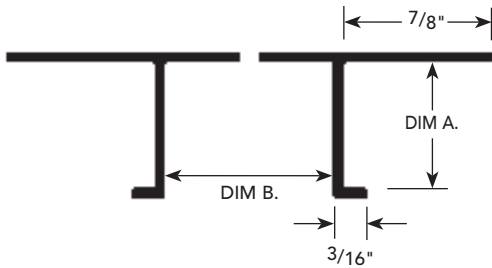


PRODUCT DETAIL :



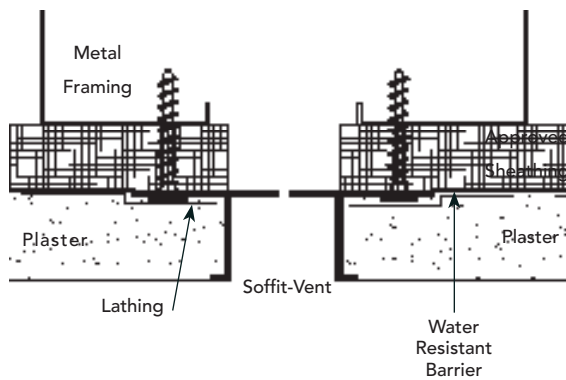
USAGE

Fry Reglet Soffit Vent provides ventilation to areas above soffit, forming an attractive reveal.

GUIDE SPECIFICATION

Where indicated on drawings, Fry Reglet Soffit Vent, as manufactured by Fry Reglet Corporation, shall be installed. Aluminum shall be extruded alloy 6063 T5, with chemical conversion coating, clear anodized or other specified finish. Refer to finish section.

INSTALLATION DETAIL : Cross Section



SOFFIT VENT SIZES\*

| DIM. A<br>PLASTER DEPTH | DIM. B<br>REVEAL WIDTH | NUMBER        |
|-------------------------|------------------------|---------------|
| 1/2"                    | 1/2"                   | DCS-50-V-50   |
| 1/2"                    | 3/4"                   | DCS-50-V-75   |
| 1/2"                    | 1"                     | DCS-50-V-100  |
| 1/2"                    | 1 1/2"                 | DCS-50-V-150  |
| 1/2"                    | 2"                     | DCS-50-V-200  |
| 1/2"                    | 3"                     | DCS-50-V-300  |
| 1/2"                    | 4"                     | DCS-50-V-400  |
| 5/8"                    | 1/2"                   | DCS-625-V-50  |
| 5/8"                    | 3/4"                   | DCS-625-V-75  |
| 5/8"                    | 1"                     | DCS-625-V-100 |
| 5/8"                    | 1 1/2"                 | DCS-625-V-150 |
| 5/8"                    | 2"                     | DCS-625-V-200 |
| 5/8"                    | 2 1/2"                 | DCS-625-V-250 |
| 5/8"                    | 3"                     | DCS-625-V-300 |
| 5/8"                    | 4"                     | DCS-625-V-400 |
| 5/8"                    | 6"                     | DCS-625-V-600 |
| 1/4"                    | 3/4"                   | PCS-25-V-75   |
| 3/8"                    | 1/2"                   | PCS-375-V-50  |
| 3/8"                    | 3/4"                   | PCS-375-V-75  |
| 3/8"                    | 1"                     | PCS-375-V-100 |
| 3/8"                    | 1 1/2"                 | PCS-375-V-150 |
| 3/8"                    | 3"                     | PCS-375-V-300 |
| 3/4"                    | 1/2"                   | PCS-75-V-50   |
| 3/4"                    | 3/4"                   | PCS-75-V-75   |
| 3/4"                    | 1"                     | PCS-75-V-100  |
| 3/4"                    | 1 1/2"                 | PCS-75-V-150  |
| 3/4"                    | 2"                     | PCS-75-V-200  |
| 3/4"                    | 2 1/2"                 | PCS-75-V-250  |
| 3/4"                    | 3"                     | PCS-75-V-300  |
| 3/4"                    | 4"                     | PCS-75-V-400  |
| 3/4"                    | 6"                     | PCS-75-V-600  |
| 1"                      | 3/4"                   | PCS-100-V-75  |
| 1"                      | 1"                     | PCS-100-V-100 |
| 1"                      | 3"                     | PCS-100-V-300 |
| 1 1/2"                  | 1 1/2"                 | PCS-150-V-150 |

\*See page PI-1 for data on number of vents and amount of vented areas/sq. ft.