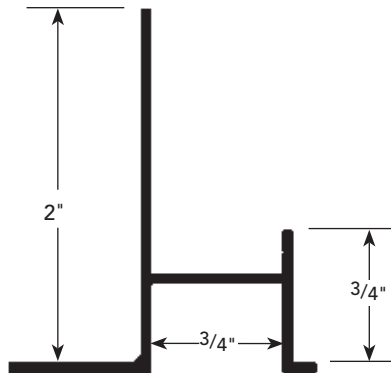
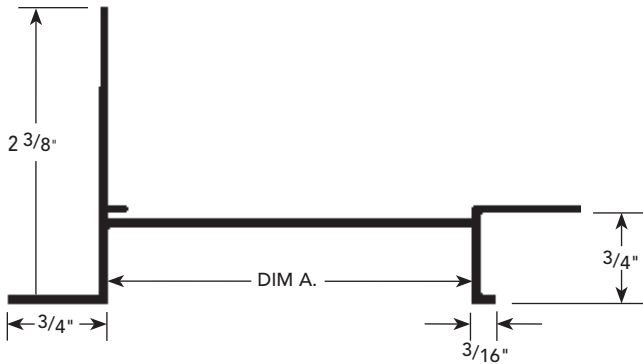


**PRODUCT DETAIL :**

**DS-75-75**



**DS-75-200/300**  
(Not to scale)



**USAGE**

Fry Reglet Thin Stucco Drip Screed prevents staining of 3/4" stucco soffit surfaces. Provides an attractive reveal between fascia and soffit. Available vented for ventilation of areas above soffit.

**GUIDE SPECIFICATION**

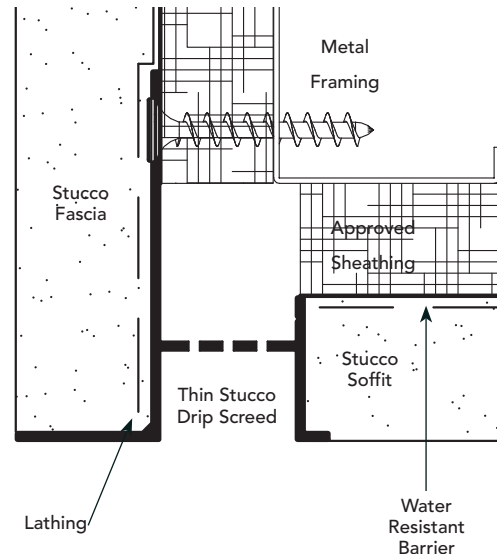
Where indicated on drawings, Fry Reglet Thin Stucco Drip Screed, as manufactured by Fry Reglet Corporation, shall be installed. Aluminum shall be extruded alloy 6063 T5, with chemical conversion coating, clear anodized or other specified finish. Refer to finish section.

**THIN STUCCO DRIP SCREED SIZES**

STUCCO THICKNESS	DIM. A REVEAL WIDTH	NUMBER	
		NON-VENTED	VENTED
3/4"	3/4"	DS-75-75	DS-75-V-75
3/4"	2"	DS-75-200	DS-75-V-200
3/4"	3"	DS-75-300	DS-75-V-300

**INSTALLATION DETAIL : Cross Section**

**DS-75-75**



**DS-75-200/300**

