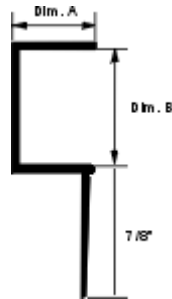
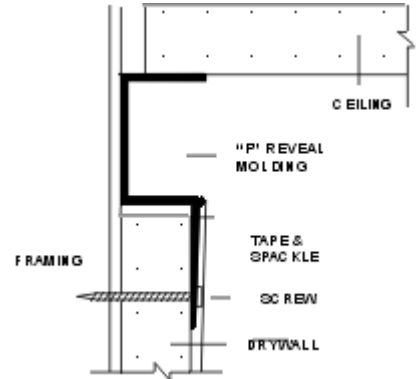


"F" Reveal Molding

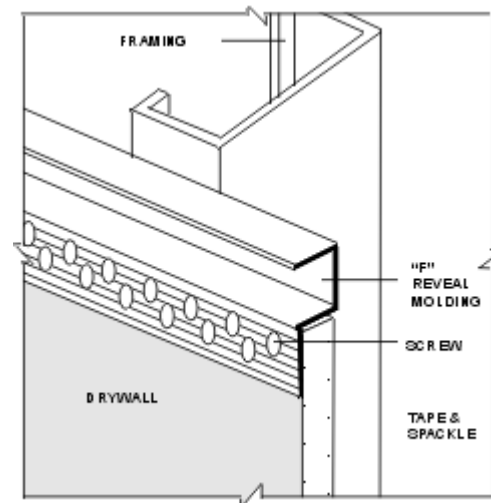
Product Detail | Installation Details



Cross Section



Perspective



Usage

Fry Reglet "F" Reveal Molding is used to form wall trim reveal where drywall terminates against sill, jamb, ceiling or other finish material in the same plane. Supports ceiling material.

Guide Specification

Where indicated on drawings, Fry Reglet "F" Reveal Molding, as manufactured by Fry Reglet Corporation, shall be installed. Aluminum shall be extruded alloy 6063 T5, with chemical conversion coating, unless otherwise specified.

"F" Reveal Molding Sizes			
Dim. A Reveal Depth	Dim. B Reveal Width	Number	
		Non-Vented	Vented
1/2"	1/8"	DRMF-50-125	
1/2"	1/4"	DRMF-50-25	
1/2"	3/8"	DRMF-50-375	
1/2"	1/2"	DRMF-50-50*	DRMF-50-V-50
1/2"	5/8"	DRMF-50-625	DRMF-50-V-625
1/2"	3/4"	DRMF-50-75**	DRMF-50-V-75
1/2"	1"	DRMF-50-100	DRMF-50-V-100
5/8"	1/2"	DRMF-625-50*	DRMF-625-V-50
5/8"	5/8"	DRMF-625-625	DRMF-625-V-625
5/8"	3/4"	DRMF-625-75**	DRMF-625-V-75
5/8"	1"	DRMF-625-100	DRMF-625-V-100
5/8"	3"	DRMF-625-300	DRMF-625-V-300
*Accepts 3/8" snap-in components			